

ReAct™ Blend

Low CO₂ Cement Product

Product Detail

Typical Physical Properties

BET Surface Area (m ² /g)	5 – 7
D10 (µm)	2.5 – 4
D50 (µm)	5 – 7.5
D90 (µm)	9 – 12

Typical Mineral Properties

Mineral Form	>95% Vaterite
Chemical Composition	>95% CaCO ₃
Color	White
Directional Brightness (ANSI T 646)	88 – 99
Diffuse Brightness (ANSI T 534)	87 – 97
Specific Gravity	2.45 – 2.5
Particle Shape	Round

Packaging

ReAct™ Blend is available to be shipped in 33 lb (~15 kg) buckets, ~2,000lb (909 kg) super sacks, or by bulk tanker.

Handling Best Practices

Storage and Handling

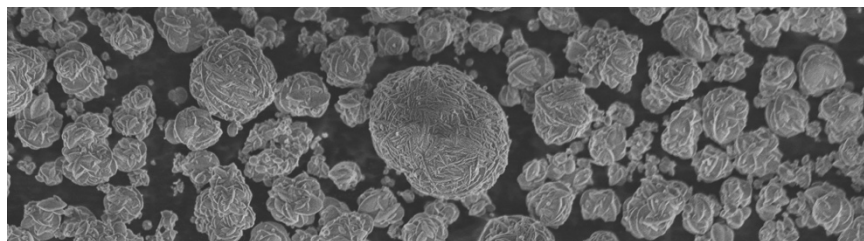
Store in dry conditions.

Shelf Life

ReAct™ Blend has a minimum shelf life of 6 months when stored under the recommended conditions.

Description

ReAct™ Blend is a dry calcium carbonate powder in the form of vaterite for use in portland cement concrete and mortars. ReAct™ Blend meets the requirements of ASTM C1797 when added independently and ASTM C150, C595, and C1157 when preblended with portland cement.



Product Characteristics

Benefits

- Decrease your use of portland cement
- Optimize your use of SCMs
- Improve workability
- Improve finishability
- Low CO₂
- Improve early-age strength

Workability and Finishing

Due to the round particle shape, ReAct™ Blend may decrease water demand or reduce the amount of water reducer required for equivalent workability of mix designs without ReAct™ Blend. Fortera recommends trial batching to determine the extent of water demand reduction.

Mixing

ReAct™ Blend can be stored in a cement silo and batched in the same manner as bulk cement. When ReAct™ Blend is added via super sacks or buckets directly into the ready-mix truck, it should be added along with 1–2 gallons of batch water per yd³ up to 15 minutes prior to loading the other constituents. After the truck is loaded with remaining constituents, the concrete should be mixed for 5 minutes at mixing speed or 70 revolutions minimum to ensure ReAct™ Blend is thoroughly integrated in the concrete.

Recommended Use

Fortera recommends a ReAct™ Blend dose of 3–25% of total cementitious material.

Admixture Compatibility

ReAct™ Blend is compatible with most common admixtures. It is recommended that the compatibility be verified when adding any new admixture to a mix design.

No warranties. SELLER does not make and expressly disclaims, and Buyer expressly waives, any AND ALL warranties WITH RESPECT TO THE PRODUCT, including warranties of merchantability or fitness for a particular purpose, regardless of whether oral or written, express or implied, or allegedly arising from any usage of any trade or from any course of dealing. FOR AVOIDANCE OF DOUBT, SELLER SHALL HAVE NO LIABILITY FOR ANY ALLEGED DEFECT IN QUALITY OF THE PRODUCT, INCLUDING any liability arising directly or indirectly from or caused by, contributed to or arising from THE PRODUCT OR the failure of any Product to correctly fulfill its intended use or function and/or meet the level of performance, quality, fitness, or durability BUYER REQUIRES IN PRODUCTS MANUFACTURED, DIRECTLY OR INDIRECTLY, BY BUYER OR ITS SUBSEQUENT PURCHASERS.

Disclaimer: The technical data presented herein is believed to be accurate and is provided for informational purposes only. It does not constitute a warranty, express or implied, including but not limited to any warranty of merchantability or fitness for a particular purpose. Users are responsible for determining the suitability of the product for their intended application. Seller assumes no liability for the results obtained or damages incurred through the use or misuse of this product.