

# Silicon Valley Company Concrete Pad & Sidewalk

## Low-Carbon Concrete Pour

A Silicon Valley company upgraded its existing headquarters with new sidewalks and concrete pads, selecting ReAct® Blend to deliver low-CO<sub>2</sub> performance without compromising durability or construction timelines.

*"From what we saw in the field, it handled really well. It was easier to finish, had a noticeably brighter color, and didn't disrupt our normal operations. What stood out most was the Fortera team, they know their material, and their guidance on mixing and placement made the whole process smooth."*

**Elijah Mosley, Superintendent**  
South Bay Construction

### At a Glance

#### Location

Santa Clara, CA

#### Date Poured

March 30, 2026

#### Yards Poured

134 yd<sup>3</sup> (102.5 m<sup>3</sup>)

#### Ready-Mix Partner

Central Concrete

#### Placement Method

Pump & Tailgate

#### Contractors

General - South Bay Construction  
Concrete - Techcon

#### Traffic

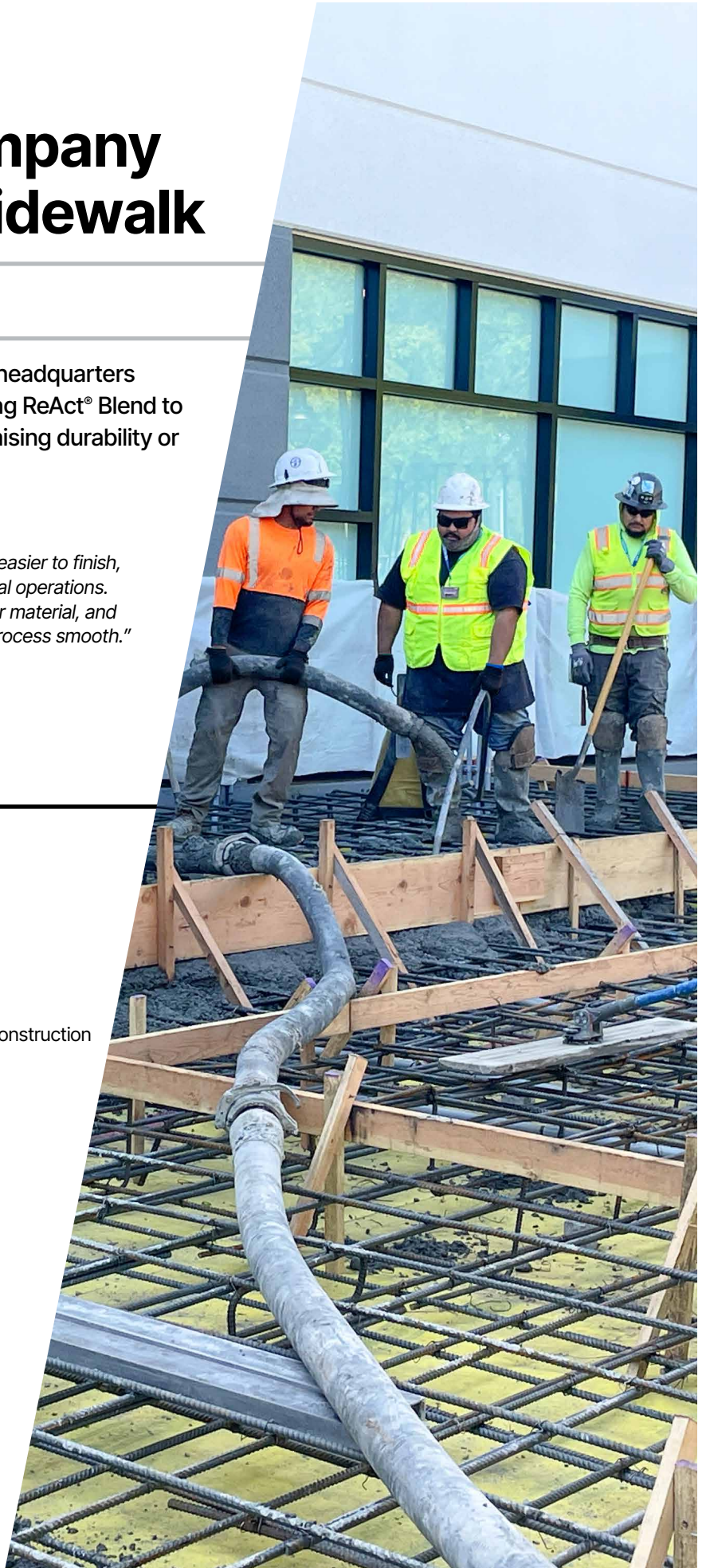
Bulk Liquid Storage

#### Usage

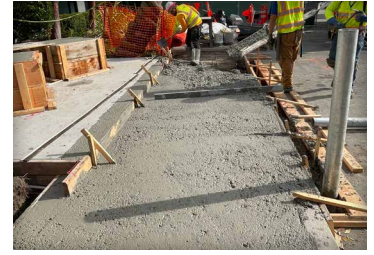
Exterior Slab on Grade

# 46%

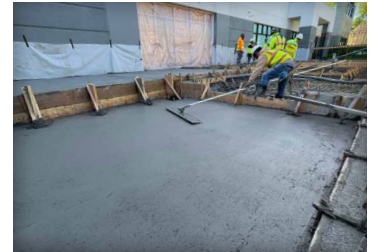
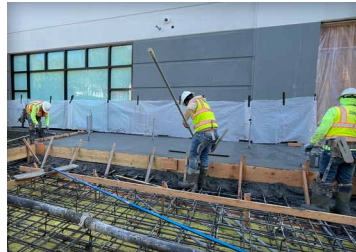
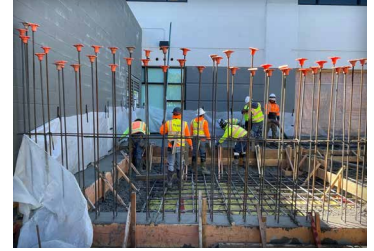
Reduction in CO<sub>2</sub>



## Sidewalk



## Concrete Pad



### Mix Design

Total Cementitious Material:  
580 lb/yd<sup>3</sup> ( 344 kg/m<sup>3</sup>)

W/CM:  
0.46

Cement:  
44%

Fly Ash:  
20%

Slag:  
30%

ReAct:  
6%

Aggregate:  
1" Limestone / Orca Sand

Slump:  
5" (12.7 cm)

Air:  
Entrapped

Design Strength:  
4,000 psi (27.6 MPa)

### Fortera Concrete Stamp



### Weather



March 30, 2026

Sunny & Windy / Low 54°F High 64°F

Project Update

